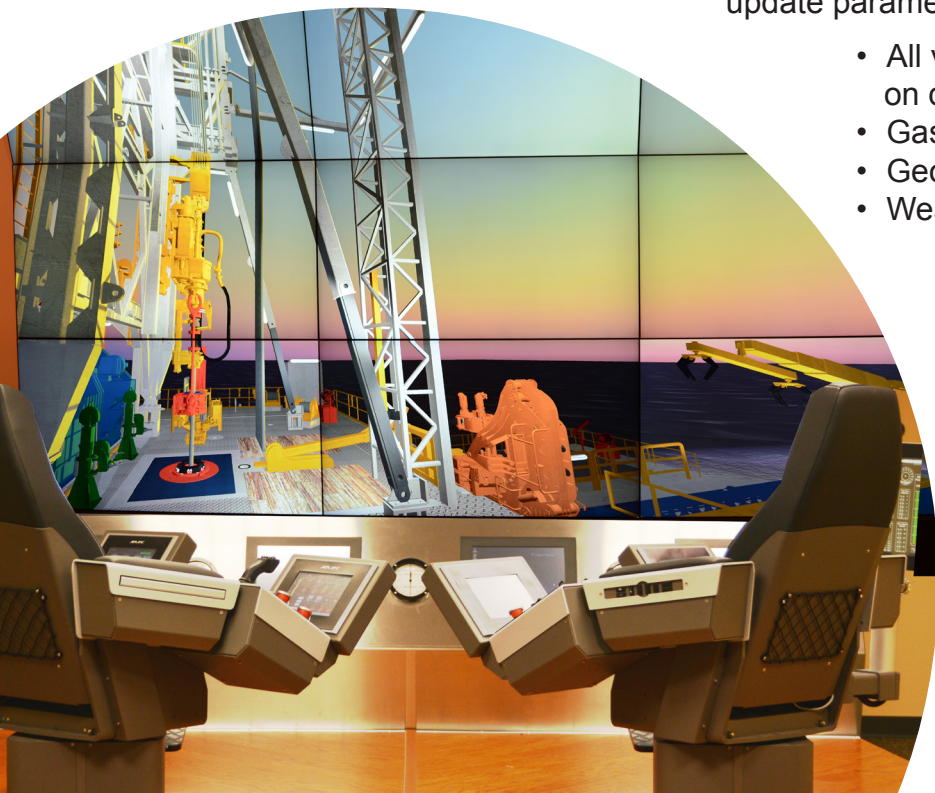


Drilling & Pipe Handling Well Control Simulators

At Jelec, we care about our customers and we always want to make sure the rig personnel are well trained and prepared to work in a safe environment. It is important to us that everyone is familiar with our system for drilling operations such as stand building, pipe handling, tripping, and well control. Partnerships with drilling schools has allowed us to develop and build our own drilling and well-control simulators. Our solution is fully customizable and can be designed according to our customers' specifications for a perfect reproduction of the drilling rig and equipment. Our simulators can be purchased or the training can be conducted by our multilingual engineers in Jelec facilities. We always strive to provide our customers with the latest technology. The trainer can interact with the system to control and monitor it at any moment from a local or remote station (desktop computer, laptop and tablet). The trainee will have to work on different scenarios triggered by the trainer.

The interface to the system gives options to update parameters such as:

- All variables that have consequences on drilling and well-control operations
- Gas level
- Geology
- Weather conditions



Jelec

General Information

www.jelec.com
info@jelec.com

Sales Information

sales@jelec.com

Telephone

(+1) 713 977 6500

Fax

(+1) 713 977 6502

Postal Address

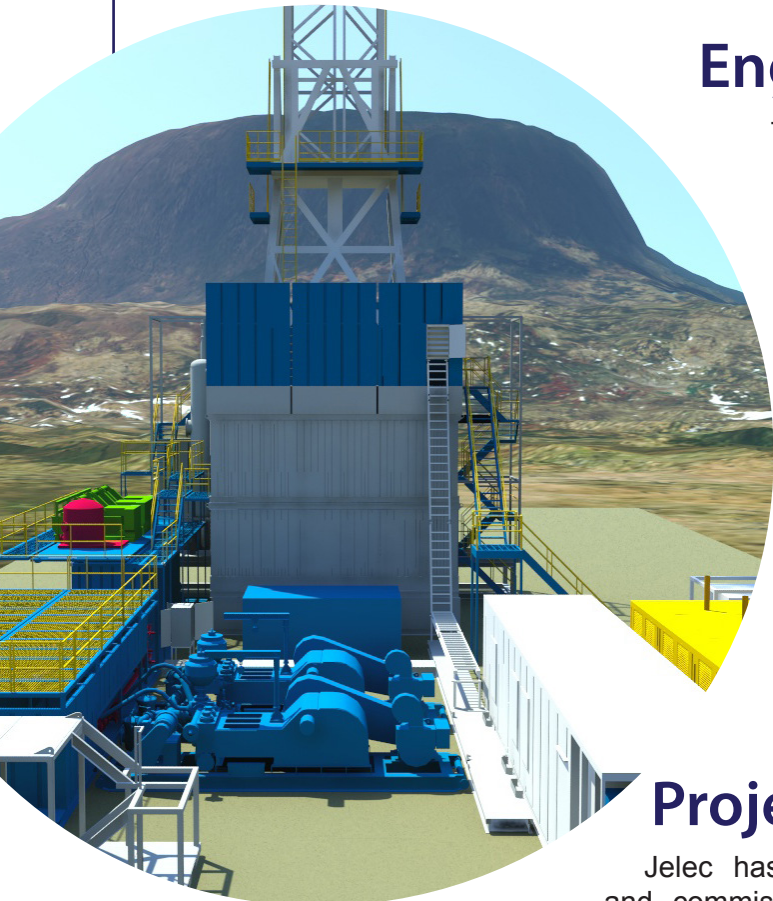
Corporate Headquarters
16901 Park Row,
Houston, TX 77084
USA



Jelec

INNOVATION AND TECHNOLOGY
DRIVING SIMPLICITY AND EFFICIENCY

Services



Engineering

Through our years of project involvement we have developed the in-house capability to provide our clients with a full range of engineering services. Jelec can provide the engineering expertise and resources required for your project, whether you are developing a complete engineering package for the design and fabrication of the latest generation land rig or just need assistance to upgrade an electrical installation onshore or offshore. Safety, reliability, efficiency and economic sense are some of the most important factors in designing these systems. Strict adherence to applicable codes and standards as well as keeping the design simple and straight forward are key values that we maintain. To ensure that these values are upheld, we maintain an up-to-date software library to verify all the calculations and sizing studies.

Project Management

Jelec has a proven track record managing electrical construction and commissioning projects. We can supply your company with the staff needed to manage or perform your project at multiple levels, from providing full installation man power and management for installations within a turn-key environment, to providing a project management team to guide shipyard or client supplied labor

Recent examples of our ability to effectively complete turn-key projects:
1) for a complete land rig with a camp to be built, outfitted, and delivered to East Africa,
2) land rig with pipe handling automation to drill in Europe.
These jobs required us to go beyond simply acquiring components and assembling the materials for our client. Our scope required us to perform engineering work, implement and actively manage a document control register, resolve technical issues and compliance matters with our clients QA/QC department, and to provide a full time management staff for the project. Fast track projects such as these require constant vigilance and attention to detail to avoid schedule slippage and costly oversights. By providing these services, we give our clients the advantage to issue only one purchase order to the entire scope of the project. Our client has only one entity to deal with to gather, transit, and manage project paperwork and documentation. It also provides the advantage of a single Factory Acceptance Test (FAT) that integrates all of the individual components into a single test procedure that minimizes the amount of time and manpower our client must invest.

Field Services

Our knowledgeable team of field service engineers and technicians can be quickly deployed to your operating site to resolve equipment issues. Our engineers and technicians are trained to ensure we provide the highest quality service and support for your equipment repairs on-site.

24/7 Technical Support

Our remote support center (J-Team) is able to monitor and diagnose equipment status remotely. Often our team is able to handle and solve any issues remotely - reducing the need for service personnel visits in the field. Furthermore, when field visits are required, our team will be able to respond faster and arrive better prepared. Thus, resulting in less downtime.

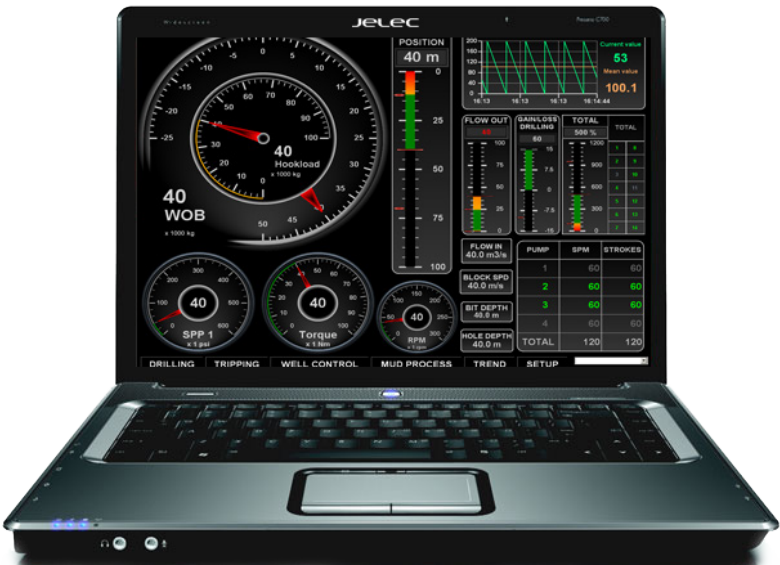
Training

Our training facility is located in Houston, and it is use to train our clients/customers in operating and maintaining their equipment safely and effectively. The training will consist of a set of different courses, that you can mix-and-match to suit your needs:

- Programmable Logic Controller (PLC)
- Drilling Instrumentation
- Generator Control
- AC Drive / VFD
- Electrical Standards & Regulations (API, IEC, NEC,...)
- Medium Voltage equipment & Installation
- Data Acquisition / OPC Server
- Hazardous Areas / API, NEC, IECEx, ATEX, ...

Rig Data Remote Access

We offer real-time access to your rig data anytime anywhere for supervision, technical support and troubleshooting.

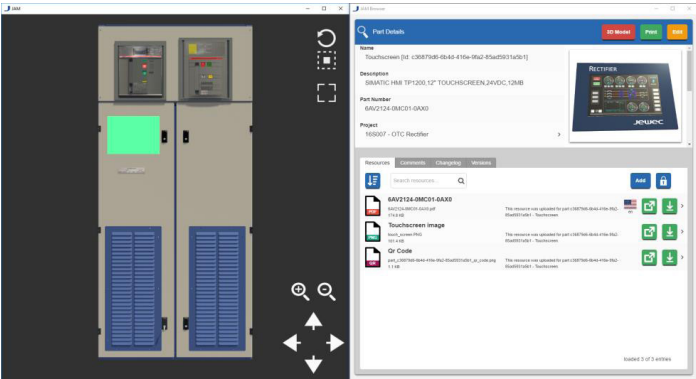


Asset Management

Jelec Asset Management (JAM) is an asset information management system. It is used to organize and centralize information about your assets. JAM is a database driven system with a web app to manage your asset information from any network connected device (PC/iOS/Android):

- Organize assets by location (rig/area/project)
- Keep track of the individual parts of each asset
- Upload and associate files with your assets/parts
- Access and view previously uploaded files
- Update files and track changes
- Review all changes made in the system
- Revert changes made to assets, parts, and uploaded files
- Print a QR code to identify your assets in the field

The salient feature of the system is a 3D user interface. Via this interface you can explore and interact with detailed 3D models of your assets. Click on parts of an asset model to inspect the files and details associated with that specific part.



Procurement - One-Stop Shop / Oilfield Supply

We provide a one-stop oilfield shop for all maintenance and consumables parts plus capital equipment. Our expertise and track record have shown a significant reduction in customer cost due to turnaround time and competitive pricing. We also hold very good relationships with external freight forwarding and packaging companies to provide significant time and cost savings that are passed to our customers. Customers can have the option of real-time tracking of their material through an online login.